



KINGSWOOD
HOMES

Better. All Round.

BRADDON

3 BEDROOM HOME

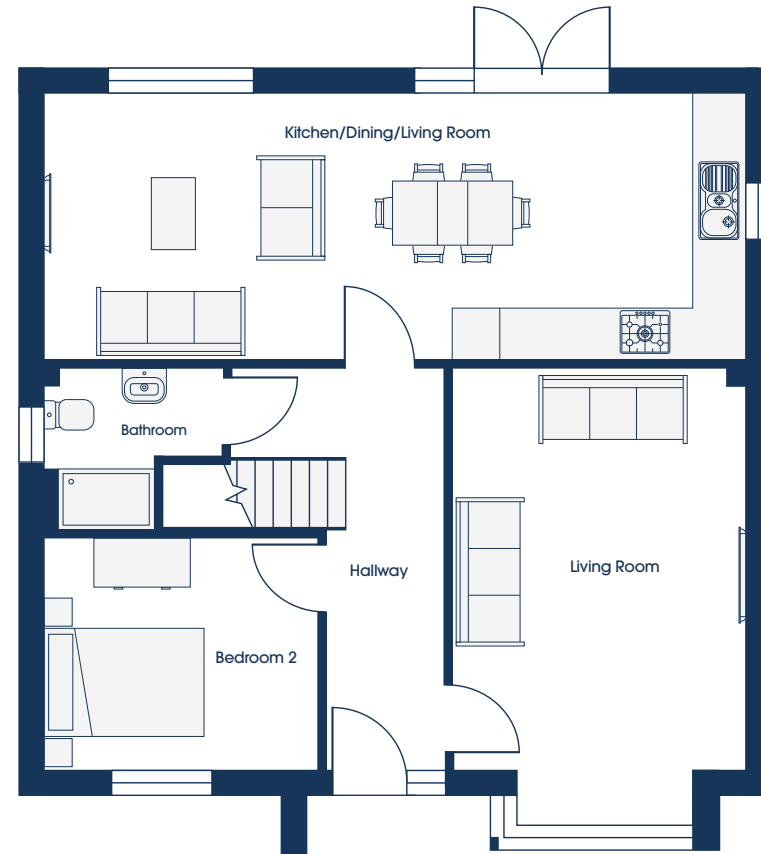
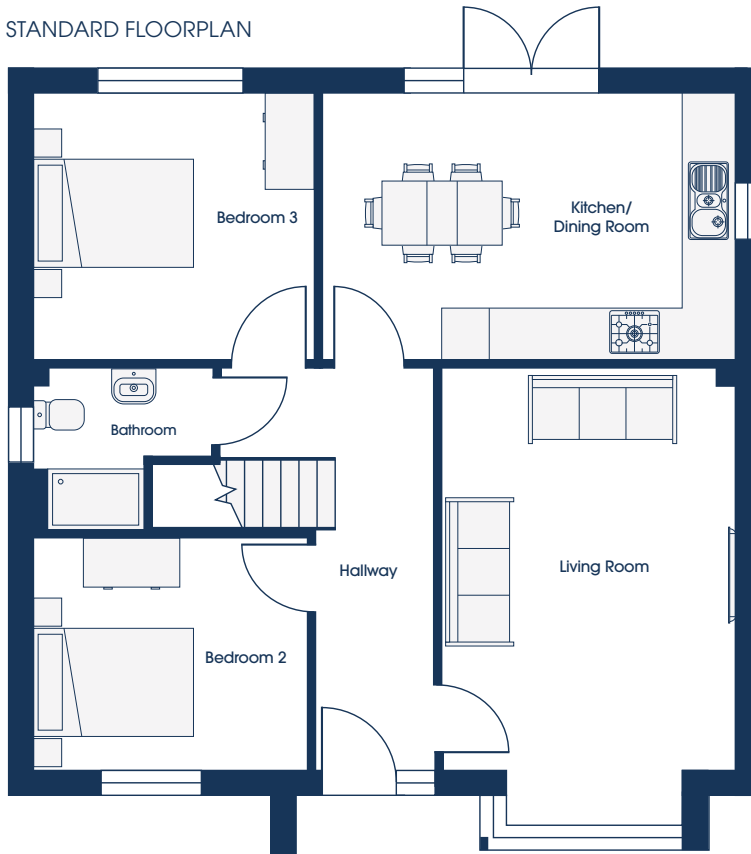


THE MARKET QUARTER
AT HATHERLEIGH

GROUND FLOOR

OPTIONS

STANDARD FLOORPLAN



1 FAMILY

Kitchen/Dining	5.17m x 3.30m	17'0" x 10'10"
Living Room	3.68m x 5.69m*	12'1" x 18'8"*
Bedroom 2	3.45m x 2.90m	11'4" x 9'6"
Bedroom 3	3.50m x 3.30m	11'6" x 10'10"
Bathroom	2.26m* x 2.00m	7'5"* x 6'7"

1 ENTERTAIN

Kitchen/Dining/Living	8.76m x 3.30m	28'9" x 10'10"
Living Room	3.68m x 5.69m*	12'1" x 18'8"*
Bedroom 2	3.45m x 2.90m	11'4" x 9'6"
Bathroom	2.26m* x 2.00m	7'5"* x 6'7"

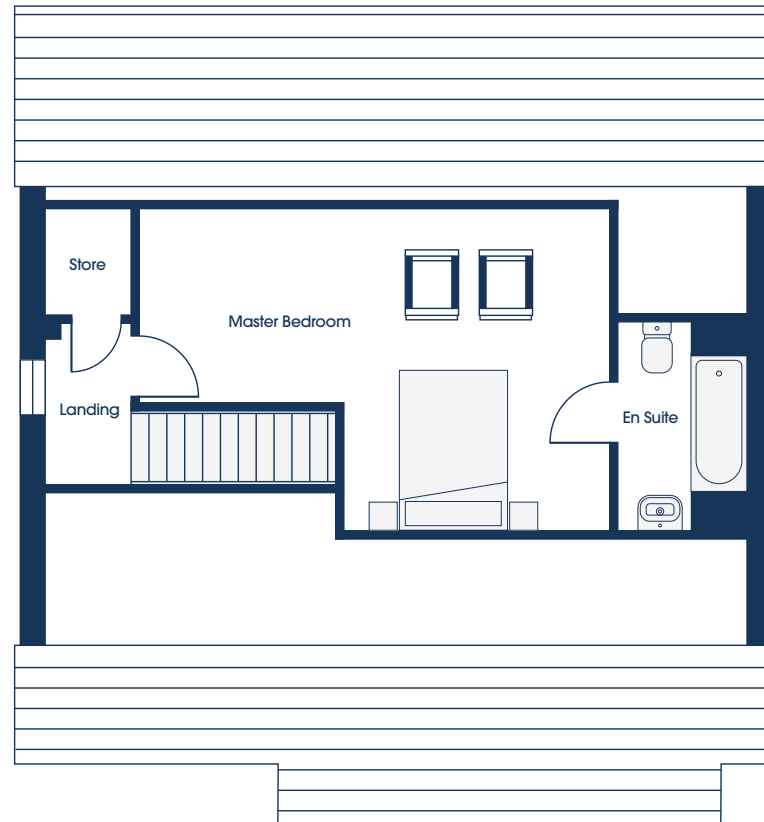
* maximum dimensions

DESIGN FEE APPLIES TO ALL NON STANDARD FLOORPLAN OPTIONS

FIRST FLOOR

OPTIONS

STANDARD FLOORPLAN



1 SLEEP

3 2

Master Bedroom	5.92m* x 4.03m*	19'5"* x 13'2"*
En Suite	1.60m* x 2.59m*	5'3"* x 8'5"*

SHAPE YOUR HOME

They say you can't put a round peg in a square hole. We get that. Which is why we give every Kingswood Home buyer a unique opportunity to shape their home from the very start.

You'll see a key of shapes on every floorplan, these show you just how flexible the floorspace is. Whether you need office space, more room for the kids to play, space to entertain or that extra bathroom to avoid the morning rush, with Kingswood the possibilities are almost endless.

It's simple really.

01837 352001 • [kingswoodhomes.uk.com](https://www.kingswoodhomes.uk.com)

Customers should note this illustration is an example of the house type. All dimensions indicated are approximate and the furniture layout is for illustrative purposes only. Drawing is not to scale. Homes may be 'handed' (mirror image) versions of the illustrations, and may be detached, semi-detached or terraced. Materials used may differ from plot to plot including render and roof tile colours. Detailed plans and specifications are available for inspection for each plot at our Sales Centre during working hours and customers must check their individual specifications prior to making a reservation.